

www.rac.co.uk



Web friendly version

# RAC Route Planner

## Your route

From Gatwick Airport (UK)

To W1J 0BD (UK)

Via



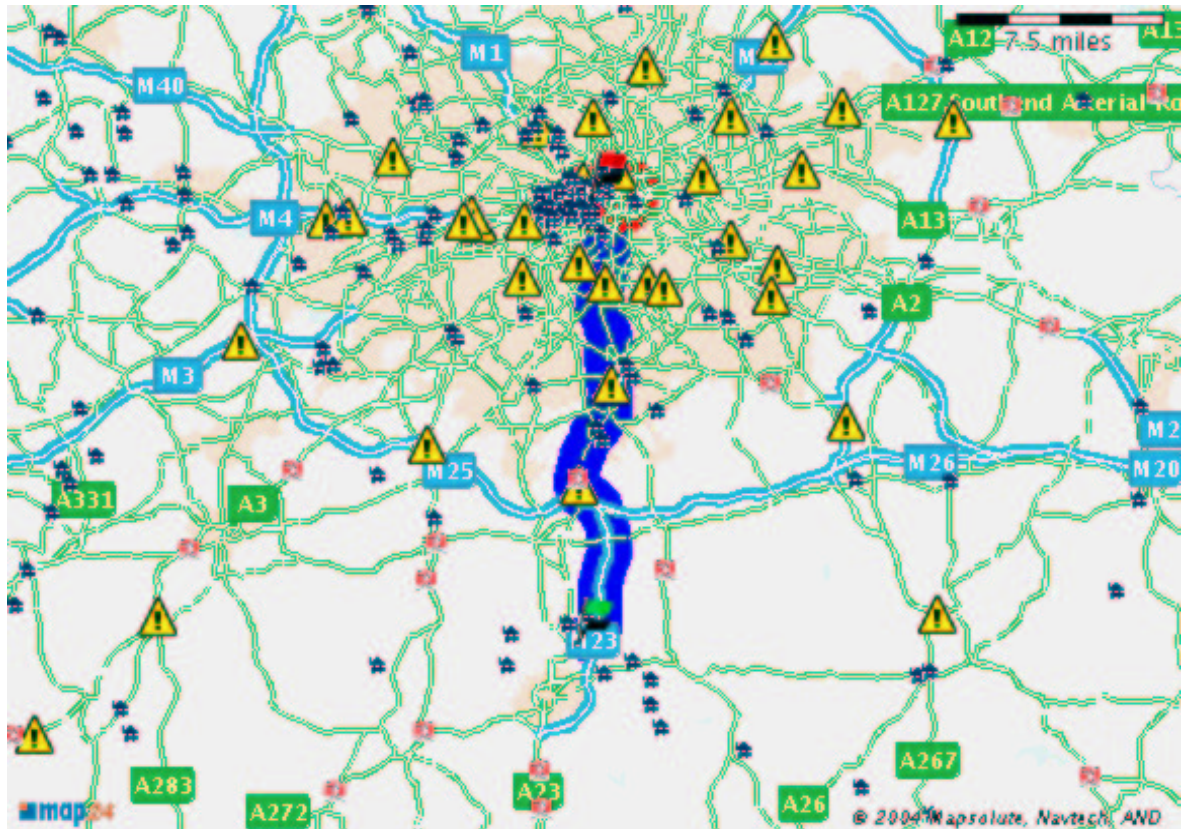
### Need a hotel?

Call RAC Hotel Reservations to book **0870 191 4770**

Over 3000 hotels and B&Bs inspected for your reassurance.

\*Calls charged at National Rate

Route map



Zoom out



Zoom in

Email route



Click on the map to re-centre

Printable version

Email route

Return journey

New route

Short description

Detailed description

Step by step maps

Description	Road type	Distance	Total
1.  Start at <b>Ring Road South, (UK)</b> direction <b>SHORT TERM PARKING</b> .		61 yards 56 m	0 yards 0 m
2.  Continue straight onto <b>Eastway</b> .		399 yards 365 m	61 yards 56 m
3.  Bear right onto <b>Ring Road North</b> .		320 yards 293 m	460 yards 421 m
4.  After 320 yards at <b>M23/J9a</b> take the 2 <sup>nd</sup> Exit off the <b>roundabout</b> into <b>M23</b> direction <b>DARTFORD, CRAWLEY, BRIGHTON, [M23] LONDON, HEATHROW AIRPORT</b> via <b>[M25]</b> .		9.8 miles 15.8 km	781 yards 714 m
5.  Leave the M23 at junction <b>M23/J7</b> and straight ahead into <b>A23 (London Road)</b> .		0.9 miles 1.4 km	10.3 miles 16.5 km
6.  Continue straight into <b>A23 (Brighton Road)</b> .		13.2 miles 21.3 km	11.1 miles 17.9 km
A23 Northbound Hooley To Purley <b>This section of road is a known traffic hot spot.</b> Call <b>1740*</b> from your mobile for updates.			
7.  You are entering <b>LONDON</b> .			
8.  Turn left into <b>A203 (Stockwell Road)</b> .		1.6 miles 2.6 km	24.3 miles 39.2 km
A23 Northbound Purley And Waddon Kent To Brixton And Stretham London <b>This section of road is a known traffic hot spot.</b> Call <b>1740*</b> from your mobile for updates.			
9.  Bear right into <b>A3036 (Albert Embankment)</b> .		0.6 miles 887 m	26 miles 41.8 km
A23 Southbound Streatham To South Croydon <b>This section of road is a known traffic hot spot.</b> Call <b>1740*</b> from your mobile for updates.			
10.  You are entering a <b>congestion charging zone</b> . The charge applies from 17 February 2003. Applies Monday to Friday - 7am to 6.30pm. Call <b>1740</b> for more information *.			
11.  After 0.6 miles take the 1 <sup>st</sup> Exit off the <b>roundabout</b> into <b>A3203 (Lambeth Bridge)</b> .		295 yards 270 m	26.5 miles 42.7 km
12.  After 295 yards take the 3 <sup>rd</sup> Exit off the <b>roundabout</b> into <b>A3212 (Millbank)</b> .		667 yards 610 m	26.7 miles 43 km
13.  Continue straight onto <b>Parliament Square/Queen Annes Gate Buildings/St Margarets Church</b> .		37 yards 34 m	27.1 miles 43.6 km
14.  Continue straight onto <b>Parliament Square</b> .		135 yards 123 m	27.1 miles 43.6 km
15.  Bear right into <b>A302 (Great George Street/Parliament Square)</b> .		56 yards 51 m	27.2 miles 43.8 km

- |     |   |   |   |                    |                       |
|-----|---|---|---|--------------------|-----------------------|
| 16. |  | Turn left into <b>A3212 (Parliament Street)</b> .   |  | 767 yards<br>701 m | 27.2 miles<br>43.8 km |
| 17. |  | After 767 yards take the 2 <sup>nd</sup> Exit off the <b>roundabout</b> into <b>A4 (Trafalgar Square)</b> . |  | 712 yards<br>651 m | 27.7 miles<br>44.5 km |
| 18. |  | Continue straight into <b>A4201 (Piccadilly Circus)</b> .   |  | 522 yards<br>477 m | 28.1 miles<br>45.2 km |
| 19. |  | Turn left onto <b>New Burlington Street</b> .   |  | 115 yards<br>105 m | 28.4 miles<br>45.6 km |
| 20. |  | Turn left onto <b>Savile Row</b> .  |  | 43 yards<br>39 m   | 28.4 miles<br>45.7 km |
| 21. |  | Turn right onto <b>Clifford Street</b> .  |  | 48 yards<br>44 m   | 28.4 miles<br>45.8 km |
| 22. |  | Turn left onto <b>Old Burlington Street</b> .   |  | 155 yards<br>142 m | 28.5 miles<br>45.8 km |
| 23. |  | Turn left onto <b>Burlington Gardens</b> .  |  | 13 yards<br>12 m   | 28.6 miles<br>46 km   |
| 24. |  | You have arrived your <b>destination "Burlington Gardens, LONDON (UK-W1J 0BD)"</b> .                        |  | 0 yards<br>0 m     | 28.6 miles<br>46 km   |

**Total distance:** 28.6 miles (46 km )

**Total estimated time:** 44 min

Don't drive tired. Plan a 15-minute break into your journey for every two hours you'll be on the road.

If you feel tired whilst driving stop at a service station for a coffee and take a short nap before continuing.

**Average speed of 30 Miles/h on national and country roads.**

**Average speed of 60 Miles/h on motorways.**

If you have any questions or difficulties with regards to the RAC route planner, please look at our page of frequently asked questions .

[Printable version](#) 

[Email route](#) 

[Return journey](#) 

[New route](#) 

 **Traffic news on your mobile**

Dial 1740 from any mobile phone. Calls cost up to 59p per minute. Check with your network.\*

**Limitation of liability**

When using route planners, RAC recommends you also refer to a road atlas. Locations of RAC Hotels plotted on route planner maps are approximate only and may be updated without notice.

We try to ensure the accuracy of all content, however, we do not accept any liability for use made by you of the content. The content of the Site should only be used for information purposes. It is not advice and you should not rely on it to make (or refrain from making) any decision or take (or refrain from taking) any action. See full Website Terms and conditions.

Using a mobile phone incorrectly whilst driving can be dangerous and may endanger the safety of other road users. It could also be illegal. You should not hold a phone when driving, and should exercise due care and attention, even when using hands free equipment.

Before departing, RAC recommends that you use our live traffic news service. Dial 1740 from your mobile phone \*. Before using the 1740 service please ensure that your vehicle is parked safely.

- **More information about mobile phone legislation**

\* Calls can also be made to 0906 470 1740 from landlines at a charge of 60p per minute at all times.

**Use of this site**

The rights in the designs, pictures, logos, photographs and content of this

site are owned by or licensed to RAC Motoring Services (RAC). They are protected by copyright, trademarks and other intellectual property rights. You may not copy, reproduce, modify, distribute, republish, display, post or transmit any part of this site without the written permission of RAC. You may view or print individual pages only for your own personal use.