

www.rac.co.uk



Web friendly version

# RAC Route Planner

## Your route

**From** Heathrow Airport (UK)

**To** W1J 0BD (UK)

**Via**



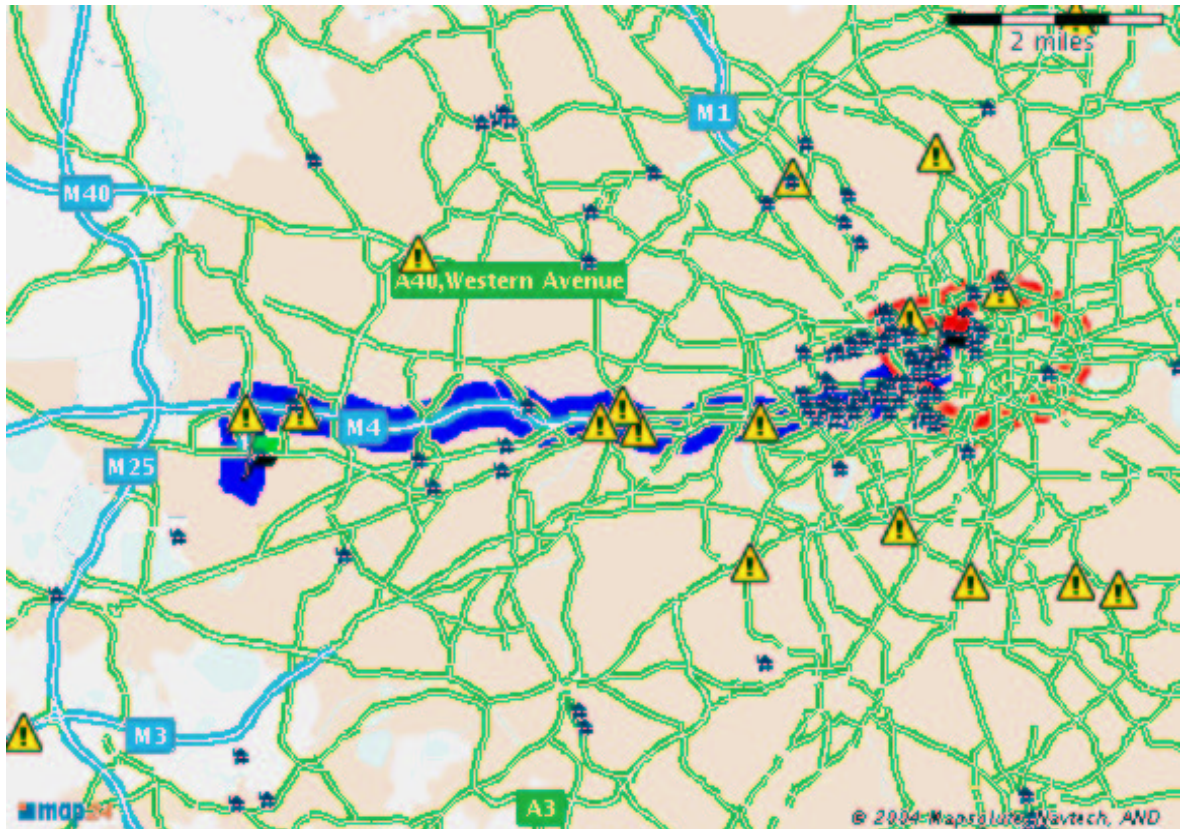
### Need a hotel?

Call RAC Hotel Reservations to book **0870 191 4770**

**Over 3000 hotels and B&Bs inspected for your reassurance.**

\*Calls charged at National Rate

Route map



Zoom out



Zoom in

Email route











Click on the map to re-centre

- Printable version
- Email route
- Return journey
- New route

- Short description
- Detailed description
- Step by step maps

Description	Road type	Distance	Total
1.  Start at <b>Inner Ring East, HOUNSLOW (UK)</b> direction <b>TERMINAL 2, TERMINAL 3, SHORT STAY PARKING.</b>		120 yards 110 m	0 yards 0 m
2.  Continue straight onto <b>Control Tower Road.</b>		245 yards 224 m	120 yards 110 m
3.  Turn right onto <b>Inner Ring West.</b>		417 yards 381 m	365 yards 334 m
4.  Continue straight onto <b>Tunnel Road.</b>		750 yards 686 m	782 yards 715 m
5.  You just left <b>HOUNSLOW.</b>			
6.  Bear left onto <b>Tunnel Road.</b>		100 yards 91 m	0.9 miles 1.4 km
7.  Leave the Tunnel Road, and join the <b>M4</b> at the <b>M4/J4a</b> junction direction <b>GATWICK AIRPORT, [M4] CENTRAL LONDON, THE WEST.</b>		9 miles 14.6 km	0.9 miles 1.5 km
M4 Southbound J4 -J 4a (Heathrow Spur Road - Heathrow Airport) <b>This section of road is a known traffic hot spot.</b> Call <b>1740*</b> from your mobile for updates.			
8.  You are entering <b>LONDON.</b>			
9.  Leave the M4 at junction <b>M4/J1</b> and straight ahead into <b>A4.</b>		6.7 miles 10.7 km	10 miles 16 km
M4 Eastbound J3 -J 1 (A312 Heston - A4 Chiswick) <b>This section of road is a known traffic hot spot.</b> Call <b>1740*</b> from your mobile for updates.			
10.  You are entering a <b>congestion charging zone.</b> The charge applies from 17 February 2003. Applies Monday to Friday - 7am to 6.30pm. Call <b>1740</b> for more information *.			
11.  Turn left into <b>A4201 (Piccadilly Circus).</b>		522 yards 477 m	16.6 miles 26.8 km
M4 Westbound J1 -J 3 (A4 Chiswick - A312 Heston) <b>This section of road is a known traffic hot spot.</b> Call <b>1740*</b> from your mobile for updates.			
12.  Turn left onto <b>New Burlington Street.</b>		115 yards 105 m	16.9 miles 27.2 km
A4 Eastbound Chiswick To West Kensington <b>This section of road is a known traffic hot spot.</b> Call <b>1740*</b> from your mobile for updates.			
13.  Turn left onto <b>Savile Row.</b>		43 yards 39 m	17 miles 27.3 km
A4 Westbound West Kensington - Chiswick <b>This section of road is a known traffic hot spot.</b> Call <b>1740*</b> from your mobile for updates.			

- |     |   |  |  |                    |                       |
|-----|---|--|--|--------------------|-----------------------|
| 14. |  | Turn right onto <b>Clifford Street</b> .   |  | 48 yards<br>44 m   | 17 miles<br>27.4 km   |
| 15. |  | Turn left onto <b>Old Burlington Street</b> .  |  | 155 yards<br>142 m | 17 miles<br>27.4 km   |
| 16. |  | Turn left onto <b>Burlington Gardens</b> .   |  | 13 yards<br>12 m   | 17.1 miles<br>27.6 km |
| 17. |  | You have arrived your <b>destination "Burlington Gardens, LONDON (UK-W1J 0BD)"</b> . |  | 0 yards<br>0 m     | 17.1 miles<br>27.6 km |

**Total distance:** 17.1 miles (27.6 km )

**Total estimated time:** 25 min

Don't drive tired. Plan a 15-minute break into your journey for every two hours you'll be on the road.

If you feel tired whilst driving stop at a service station for a coffee and take a short nap before continuing.

**Average speed of 30 Miles/h on national and country roads.**

**Average speed of 60 Miles/h on motorways.**

If you have any questions or difficulties with regards to the RAC route planner, please look at our page of frequently asked questions .

[Printable version](#) 

[Email route](#) 

[Return journey](#) 

[New route](#) 

 **Traffic news on your mobile**

Dial **1740** from any mobile phone. Calls cost up to 59p per minute. Check with your network.\*

**Limitation of liability**

When using route planners, RAC recommends you also refer to a road atlas. Locations of RAC Hotels plotted on route planner maps are approximate only and may be updated without notice.

We try to ensure the accuracy of all content, however, we do not accept any liability for use made by you of the content. The content of the Site should only be used for information purposes. It is not advice and you should not rely on it to make (or refrain from making) any decision or take (or refrain from taking) any action. See full Website Terms and conditions.

Using a mobile phone incorrectly whilst driving can be dangerous and may endanger the safety of other road users. It could also be illegal. You should not hold a phone when driving, and should exercise due care and attention, even when using hands free equipment.

Before departing, RAC recommends that you use our live traffic news service. Dial 1740 from your mobile phone \*. Before using the 1740 service please ensure that your vehicle is parked safely.

- **More information about mobile phone legislation**

\* Calls can also be made to **0906 470 1740** from landlines at a charge of 60p per minute at all times.

**Use of this site**

The rights in the designs, pictures, logos, photographs and content of this site are owned by or licensed to RAC Motoring Services (RAC). They are protected by copyright, trademarks and other intellectual property rights. You may not copy, reproduce, modify, distribute, republish, display, post or transmit any part of this site without the written permission of RAC. You may view or print individual pages only for your own personal use.